

## 6.0 CATEGORISATION OF LAND

### 6.1 Categorisation and Objectives for Land

Clause 36(4) of the Local Government Act requires that the land subject of a plan of management be categorised as one or more of:

- a natural area
- a sportsground
- a park
- an area of cultural significance
- general community use

According to the Guidelines for categorisation as listed in the Local Government (General) Regulation 1999 and core objectives for management of community land as listed in the local Government Act (Community Land Amendment 1998), The Balmain East Foreshore reserves as covered by this plan of management can be categorised as “ park”.

“

Category	Guidelines for Categorisation	Core Objectives for Community Land Categories
Park	The land is, or is proposed to be, improved by landscaping, gardens or the provision of non-sporting equipment and facilities, for use mainly for passive or active recreational, social, educational and cultural pursuits that do not unduly intrude on the peaceful enjoyment of the land by others	(a) to encourage, promote and facilitate recreational, cultural, social and educational pastimes and activities, and (b) to provide for passive recreational activities or pastimes and for the casual playing of games, and (c) to improve the land in such a way as to promote and facilitate its use to achieve the other core objectives for its management

The core objectives must guide planning, decision making, and day to day management / and maintenance of the reserves.

---

PAGE INTENTIONALLY LEFT BLANK FOR DOUBLE SIDED PRINTING

## 7.0 STRATEGY AND ACTION PLAN

The following strategies and actions aim to address key ongoing management issues relating to the Balmain East foreshores and also to outline a long term vision (as incorporated in the Masterplan - refer Section 8) for the parklands. That vision seeks to address useability, amenity tree and view management, and accessibility issues identified through the consultation phases. Figure 20 in section 8.0 illustrates locations of the actions as listed.

### 7.1 Strategies

The priorities for improvements as set out in the table below have been categorised in accordance with the following:

Priority	Timeframe
Short Term	0 - 5 Years
Medium Term	5 - 15 Years
Long Term	15+ Years
Ongoing	Ongoing

The table following sets out the objectives and performance targets for the Balmain East Foreshores reserves; strategies to achieve the objectives and performance targets; ranks their priority; and provides performance monitoring criteria.

Objectives & Performance targets	Strategies to achieve objectives and performance targets	Priority	Performance Monitoring / Evaluation
<b>1. CONTEXT</b>			
To maintain the current non-organised recreational role of the Balmain East foreshore reserves for both local and district users	1.1 Continue to facilitate non-organised recreational use of reserve	Ongoing	Community use is maintained with high level of satisfaction
To maintain visual role of reserves in providing open space fringe to the Balmain East viewed from the harbour and other open spaces	1.2 Conserve and manage green canopy character of reserve		Public views to Balmain East are buffered by parkland
To mitigate the impact of event use of the foreshores on the parklands and adjoining residents	Manage Event use Refer USAGE strategies	Ongoing	
<b>2. OWNERSHIP</b>			
Promote broad community access to and enjoyment of reserve	2.1 Support non-local use of reserve for events and for activities such as fishing which draw from a larger user catchment. Apply appropriate management as outlined elsewhere	Ongoing	Event use and broad public use maintained and impacts managed
	2.2 Provide for community booking of reserves for larger organised gatherings	Ongoing	Event use and broad public use maintained and impacts managed
Optimise community benefit of open space	2.3 Relocate basketball court provide new location for community facility - Remove pavement and plant site with loop path	Ongoing	Best use of space is made without undue impacts
Improved access to Thornton Park	2.4 Potential for extension of open space zoning on Council owned land to provide pedestrian link from Gallimore Ave open space to Thornton Park	Medium Term	Public accessibility is improved
Objectives & Performance targets	Strategies to achieve objectives and performance targets	Priority	Performance Monitoring / Evaluation

## 7.0 STRATEGY AND ACTION PLAN

Investigations & design			
Integrated design response to key issues	<p>2.5 Lookes Avenue Reserve:</p> <ul style="list-style-type: none"> <li>- Investigate interpretation of past Howards boatyard inlet</li> <li>- use of grassed area - possible design of terraces or reduced slopes with low walling</li> <li>- seating</li> <li>- shade</li> <li>- entry treatments at Lookes Avenue and access to reserve</li> </ul>	Short term	Increased use of Lookes Ave Reserve
Integrated design response to key issues	<p>2.6 Thornton Park</p> <ul style="list-style-type: none"> <li>- Improved link to wharf entrance</li> <li>- investigate options for replacing the public toilet facilities on lower Thornton Park to improve views from Darling St to harbour and visual links along foreshore subject to heritage and visual impact appraisal</li> <li>- possible pedestrian access to Gallimore Avenue - extend open space zoning to link to small open space on Gallimore Ave</li> <li>- Shade planting at Childs play area</li> <li>- Improved buffer planting to lower terrace northern edge</li> </ul>	Short term	Improved use and amenity of park
Integrated design response to key issues	<p>2.7 Foreshore and upper junction to 2-8 Weston Street</p> <ul style="list-style-type: none"> <li>- provision of at grade link</li> <li>- new sandstone walling to grass bank including adjoining seating</li> <li>- surfacing of foreshore area - part stone / part gravel</li> <li>- tree management</li> <li>- widened link path from north carpark</li> <li>- junction to foreshore gravel area to south and link to link path from north carpark</li> </ul>	Short term	Foreshore at grade access facilitated and improved link path to north carpark
Integrated design response to key issues	<p>2.8 Toddlers playspace to Illoura Reserve</p> <ul style="list-style-type: none"> <li>- replacement of pole walling with adequate drainage - retain poles as element refencing original design and with potential to be extended into playspace as play elements</li> <li>- provision of sandstone edge between playspace and path / grassed area</li> <li>- new play space / element design</li> <li>- new play surface</li> </ul>	Short term	Improved use and amenity of playspace
Integrated design response to key issues	<p>2.9 Northern carpark to Illoura Reserve (Cpk 3)</p> <ul style="list-style-type: none"> <li>- re- design for one way circulation sth to nth</li> <li>- angle parking spaces</li> <li>- re-planting of terrace bed</li> <li>- re-surface carpark (gravel surface preferred)</li> </ul>	Short term	Improved use and access to carpark
Objectives & Performance targets	Strategies to achieve objectives and performance targets	Priority	Performance Monitoring / Evaluation

Integrated design response to key issues	2.10 Playspace at Viewing deck Illoura Reserve <ul style="list-style-type: none"> <li>- seating</li> <li>- custom play elements</li> <li>- Flying Fox to north side of deck for teenage play</li> </ul>	Short term	Increased diversity of use Use of lower area activated
Integrated design response to key issues	2.11 Edge treatment to upper path <ul style="list-style-type: none"> <li>- develop design treatment for upper path edge to replace timber edge and post and chain fence</li> <li>- stone wall sympathetic with original design to sheer edges</li> <li>- stone hob or stone hob with post and chain barrier to areas where drop is set away from edge</li> </ul>	Short term	Consolidated charcater of fabric and improved edge treatment
Integrated design response to key issues	2.12 Boardwalk access between Illoura Reserve & Peacock Point <ul style="list-style-type: none"> <li>- undertake detailed site assessment</li> <li>- review environmental, heritage, and visual impacts / issues</li> <li>- establish feasibility (or not)</li> <li>- Implementation design</li> </ul>	Short term	Consolidated charcater of fabric and improved edge treatment
3. USE			
Event use maintained recognise regional role - but impacts on reserve and local area are controlled	3.1 Develop management protocols for New years Eve management of area to include: <ul style="list-style-type: none"> <li>- traffic management / parking</li> <li>- alcohol free zone - implemented from 12.00pm midday on new years eve</li> </ul>	Ongoing	Event use and broad public use maintained and impacts managed
Illoura Reserve			
Sustainable use of existing basketball area	3.2 Review alternative use of existing basketball area: <ul style="list-style-type: none"> <li>- remove pavement and plant site with loop path</li> <li>- no trees removed to east of path</li> <li>- selective tree removal considered within site</li> <li>- liason with Horticulturist to develop planting scheme to respect original scheme</li> </ul>	Long term	Best use of space is made without undue impacts
Provision of teenage suitable activities within park	3.3 Upgraded lower area: <ul style="list-style-type: none"> <li>- create activity elements including seat platforms in low key locations adjoining grassed areas using theme of original play equipment - vertical poles etc</li> </ul>	Short term	Increased diversity of use Use of lower area activated

## 7.0 STRATEGY AND ACTION PLAN

Objectives & Performance targets	Strategies to achieve objectives and performance targets	Priority	Performance Monitoring / Evaluation
4. ACCESS			
Lookes Avenue Reserve			
Improved frontage presentation	4.1 General landscape improvements to provide more inviting public entry <ul style="list-style-type: none"> <li>- replace boom gate and bollards with more sympathetic treatment</li> <li>- paved path access into reserve</li> <li>- identification and interpretive signage</li> </ul>		Improved aesthetic appearance Increased awareness of space Increased usage
Thornton Park			
Improved frontage presentation	4.2 Review toilet location - possible sinking into edge of Thornton Park to reduce visual impact at street level	Short term	Improved visual quality Improved functionality
	4.3 Investigate improved access from lower promenade / terrace to Wharf	Medium term	Improved access
Illoura Reserve			
Improved foreshore access links to 2-8 Weston Street foreshore	4.4 Provide access link <ul style="list-style-type: none"> <li>- Provide at grade link that will extend at grade access from Ferry Wharf / end of Darling St through 2-8 Weston St to Illoura Reserve foreshore</li> </ul>	Short term	Continuation of foreshore access
Improved link paths to north carpark (cpk3)	4.5 Widen existing stone path to match original path system <ul style="list-style-type: none"> <li>- Widen stone path - rebuild</li> <li>- design suitable for vehicular traffic as applicable to park</li> </ul>	Short term	Improved access
	4.6 Consider path link from south end of north carpark to foreshore <ul style="list-style-type: none"> <li>- possible provision of stone path to define mulched tree zone</li> <li>- if path not provided - install stone edge to provide maintenance edge to grass</li> </ul>	Medium term Note if path not to be implemented - edge is Short term priority	Improved access into park  Definition of edge to mulched tree zone
Foreshore path link consolidated / extended	4.7 Foreshore access and sitting zone <ul style="list-style-type: none"> <li>- Widen and extend foreshore stone path linking from north to south - ensure disabled suitable surface</li> <li>- Extend recently installed asphalt at 2-8 Weston Street end to meet main sandstone path</li> <li>- provide gravel zone between path and wall</li> <li>- provide drainage / escape behind seawall for seawater topping wall</li> <li>- provide bench seating</li> </ul>	Short term	Improved access through park  Improved use of foreshore for casual sitting / rest
Improved access at junction of southern steps to Peacock Point and Edward Street	4.8 Provide linking pavement <ul style="list-style-type: none"> <li>- Provide stone path from top of Illoura steps to to of Peacock Point steps</li> <li>- Provide stone path from top of Peacock Point steps to end of Edward St</li> </ul>	Medium term	Enhanced access and elimination of erosion

Objectives & Performance targets	Strategies to achieve objectives and performance targets	Priority	Performance Monitoring / Evaluation
Foreshore access between Illoura Reserve and Peacock Point	4.9 Foreshore access over intertidal zone <ul style="list-style-type: none"> <li>- disabled suitable boardwalk</li> <li>- low impact structure with permeable deck</li> <li>- subject to environmental, heritage, and visual assessment</li> </ul>	Short term	Additional park experience adds to character and amenity of park  Minimise visual & construction impact
Provide at grade access to viewing deck upper landing	4.10 Ramp access to viewing deck <ul style="list-style-type: none"> <li>- provide timber access ramp from existing sandstone to deck</li> </ul>	Short term	Improved equity of use
Peacock Point			
Improved access to main stairway to park	Refer 4.8		
5. FACILITIES / AMENITIES			
Coordinated low key but effective regulatory signage	5.1 Improved signage <ul style="list-style-type: none"> <li>- more visible / easy to read</li> <li>- to select locations at entry points etc</li> <li>- integrated with other landscape elements where possible</li> </ul>	Short term	Effective signage without visual clutter
Lookes Avenue Reserve			
Low key provision of facilities caters for recreational use	5.2 Facilities integrated to coordinated design for reserve <ul style="list-style-type: none"> <li>- entry signage</li> <li>- access path from Lookes Ave</li> <li>- interpretive elements - past marine uses</li> <li>- some limited park seating and incidental seating through terrace walls etc</li> </ul>	Short term	Increased use of Lookes Ave Reserve
Thornton Park			
Upgrade aged park elements	5.3 Upgrade foreshore balustrade <ul style="list-style-type: none"> <li>- Heritage input</li> <li>- Replace with new balustrade - possibly timber and steel - undertake design assessment</li> </ul>	Short term	Low visual impact
Illoura Reserve			
Improved foreshore seating areas	5.4 Provide upgraded seating amenity in foreshore zones <ul style="list-style-type: none"> <li>- at junction to 2-8 Weston St</li> <li>- along foreshore gravel area</li> </ul>	Short term	Improved use and amenity
Upgrade aged park elements	5.5 Remove timber pole entry clusters and make good - consider contemporary entry treatment in conjunction with original designer <ul style="list-style-type: none"> <li>- Edward Street north</li> <li>- Edward Street south</li> </ul>	Short term	Improved visual appearance

## 7.0 STRATEGY AND ACTION PLAN

Objectives & Performance targets	Strategies to achieve objectives and performance targets	Priority	Performance Monitoring / Evaluation
	5.6 Upgrade existing toddlers playspace <ul style="list-style-type: none"> <li>- walling (retain pole theme - replace materials) and edging</li> <li>- play elements - play elements to be replaced with timber themed elements that integrate with park setting - play element to have focus on 2-6 year olds</li> <li>- play surface</li> </ul>	Short term	Improved use and amenity
	5.7 South lookout to deck viewing area <ul style="list-style-type: none"> <li>- extend stone paving at south lookout</li> <li>- extend stone wall edge to south and north</li> <li>- provide stone wall or wall / chain barrier edge between lookout and viewing deck</li> </ul>	Short term	Improved use and amenity
	5.8 Path north of deck viewing area <ul style="list-style-type: none"> <li>- provide stone wall adjoining path north of viewing area to adjoin existing wall - provide design gap between new and old</li> </ul>	Medium term	Improved visual appearance and continuity
Upgrade aged park elements	5.9 Viewing Deck Improvements <ul style="list-style-type: none"> <li>- provide galvanised post caps to prevent deterioration of post timber from top</li> <li>- termite proofing</li> <li>- choose correct timber penetrating oil for decking</li> <li>- provide annual treatment of timber deck</li> <li>- additional bench seating to viewing deck</li> <li>- remove existing swing structure</li> </ul>	Medium term	Improved use and amenity
	5.10 New teenage suitable elements in park <ul style="list-style-type: none"> <li>- reinterpretation of timber based play / activity elements</li> </ul>	Medium term	Increased diversity of use Use of lower area activated
Open up visual enclosure of viewing deck cladding	5.11 Replacement of Deck Barrier infill <ul style="list-style-type: none"> <li>- provide steel panel infill to allow views and breeze through safety barrier</li> <li>- design in liaison with original designer</li> </ul>	Long term	Improved visual amenity to deck
Peacock Point			
Improve curtilage of Anchor	5.12 Provide edging and wearing surface <ul style="list-style-type: none"> <li>- provide steel edge</li> <li>- provide stabilised gravel surface</li> </ul>	Short term	Improved visual curtilage to Anchor & ease of maintenance
6. PARKING			
Improved treatment and management of parking areas	6.1 Upgrade northern carpark (cpk 3): <ul style="list-style-type: none"> <li>- improve circulation &amp; use of space</li> <li>- edging and drainage to downslope side</li> <li>- upgrade surfacing</li> <li>- marking of spaces</li> <li>- reinstate planting scheme to planter bed</li> </ul>	Medium term	Improved ease of use and accessibility



Objectives & Performance targets	Strategies to achieve objectives and performance targets	Priority	Performance Monitoring / Evaluation
	<p>6.2 Upgrade central carpark (cpk 2):</p> <ul style="list-style-type: none"> <li>- provide kerb edging and drainage</li> <li>- remove timber fence</li> <li>- upgrade surfacing</li> <li>- reinstate planting scheme to slope between carpark and path</li> </ul>	Medium term	Improved ease of use and accessibility
	<p>6.3 Upgrade southern carpark (cpk 1):</p> <ul style="list-style-type: none"> <li>- realign parking to provide 90 degree on street parking</li> <li>- provide kerb edging and drainage</li> <li>- upgrade surfacing</li> <li>- reinstate planting scheme to zone between carpark and path</li> </ul>	Long term	Improved ease of use and accessibility
<b>7. CULTURAL HERITAGE</b>			
Improved interpretation of rich cultural heritage	<p>7.1 Develop coordinated strategy for interpretation across all Balmain East foreshore reserves</p> <ul style="list-style-type: none"> <li>- coordinated approach to themes of settlement, maritime industry, open space</li> <li>- coordinated signage fabric across all parks</li> </ul>	Short term	Coordinated visual appearance Sequence of information / stories Improved understanding / awareness
<b>8. LANDSCAPE CHARACTER AND VISUAL AMENITY</b>			
Individual character of each reserve is conserved	<p>8.1 Recognise and conserve varied visual and landscape character between each reserve that should be conserved through any upgrades and general management</p> <p>Lookes Avenue Reserve</p> <ul style="list-style-type: none"> <li>- open character with limited development to date</li> </ul> <p>Thornton Park</p> <ul style="list-style-type: none"> <li>- Formal planning and landscape elements with diverse planting character</li> </ul> <p>Illoura Reserve</p> <ul style="list-style-type: none"> <li>- Significant foreshore parkland highlighting native planting and natural elements of stone and timber</li> <li>- Original scheme did pursue a cost effective approach due to budget for some elements - potential to upgrade timber walling and extend stone paving to provide a higher level of quality and durability</li> </ul> <p>Peacock Point</p> <ul style="list-style-type: none"> <li>- Design and nature of stone walling and paving are more urban in character than Illoura Reserve.</li> <li>- Potential to better integrate landscape character with Illoura Reserve through planting scheme - increase continuity</li> </ul>	Ongoing	Character is conserved and protected to enhance user experience

## 7.0 STRATEGY AND ACTION PLAN

Objectives & Performance targets	Strategies to achieve objectives and performance targets	Priority	Performance Monitoring / Evaluation
Coordinated materials and detailing approach to upgrade works in Illoura Reserve	8.2 Develop finishes manual for Illoura Reserve in sympathy with original scheme to guide improvement works: <ul style="list-style-type: none"> <li>- walling - 500mm and 1000mm</li> <li>- walling with barrier</li> <li>- sandstone kerb edge</li> <li>- sandstone path</li> <li>- pole walling (to playground)</li> <li>- bench seating</li> <li>- pole seating</li> <li>- signage</li> </ul>	Short term	New works compliment original park scheme and add to amenity / character
Public views to adjoining streets and residences from within park and to park are protected.	8.3 Maintain vegetative buffer whilst recognising desire of local residents for visual links to harbour. <ul style="list-style-type: none"> <li>- Remove weed tree species</li> <li>- Plant supplementary trees to original planting zones to replace senescent trees</li> </ul>	Short term	Balanced visual outcome for both public and private benefit
<b>9. SOILS &amp; DRAINAGE</b>			
Improved drainage along path systems to prevent erosion / scouring	9.1 Provide drainage to problem locations: <ul style="list-style-type: none"> <li>- identify problem adjoining upper path</li> <li>- provide drainage penetrations or other applicable strategies to enable stormwater escape</li> </ul>	Short term	Erosion / scouring prevented
	9.2 Provide drainage to behind seawall when resurfacing of foreshore zone implemented	Medium term	Erosion / scouring prevented
<b>10. VEGETATION MANAGEMENT</b>			
Strategic approach to tree management	10.1 Arborists assessment of all trees through Balmain East Reserves to determine health and safe useful life span	Short term	Information for strategic approach to tree management is available
<b>Lookes Avenue Reserve</b>			
Shade tree canopy to enhance use of reserve	10.2 Investigate planting as part of integrated design for reserve: <ul style="list-style-type: none"> <li>- community consultation at initial and options phases</li> <li>- review of options</li> <li>- implement planting</li> </ul>	Medium term	Planting implemented and conserved  Long term provision of shade
<b>Thornton Park</b>			
Maintain diverse planting character as complement to Illoura Reserve	10.3 Maintain character of planting <ul style="list-style-type: none"> <li>- Maintain mixed species character</li> <li>- promote community involvement</li> </ul>	Ongoing	Character protected  Long term provision of shade and buffer
Improved shade and buffer planting	10.4 Planting improvements <ul style="list-style-type: none"> <li>- Shade tree planting at Childs play area</li> <li>- Improved buffer planting to lower terrace northern edge</li> </ul>	Short term	Planting implemented and conserved

Objectives & Performance targets	Strategies to achieve objectives and performance targets	Priority	Performance Monitoring / Evaluation
<b>Illoura Reserve</b>			
Sandstone cliff and wall faces are clear of weeds and present strong character to lower reserve	10.5 Improve integrity of cliff and wall faces <ul style="list-style-type: none"> <li>- Remove weeds</li> <li>- Remove soil and leaf matter</li> <li>- Remove vegetation not in keeping with original planting scheme (refer Appendix)</li> </ul>	Short term	Improved visual integrity of wall and cliff faces
Original planting scheme and character to upper path / walk	10.6 Restore original planting scheme and character to zones either side of path <ul style="list-style-type: none"> <li>- Remove species in conflict with original scheme</li> <li>- Restore spatial modulation of planting along the path</li> </ul>	Medium term	Vegetation reflects original design intent
	10.7 Replant cleared area at southern viewing area <ul style="list-style-type: none"> <li>- Community consultation</li> <li>- Extend viewing area pavement and walling</li> <li>- Remove grass and plant to reflect original scheme</li> </ul>	Medium term	Visual experience reflects original design intent
Improved planting to north parking area	10.8 Replant slopes above and below north parking area <ul style="list-style-type: none"> <li>- Replant upper planter and lower slope to reflect original scheme</li> <li>- To slopes to south of play space - retain as trees in mulch - no understorey</li> </ul>	Short term	Visual experience reflects original design intent
Planned replacement planting to appropriate locations to address tree senescence	10.9 Replacement tree planting to selected areas of existing canopy as identified by original designer (refer Appendix 4 for diagram) <ul style="list-style-type: none"> <li>- lower park to south of playspace</li> <li>- within lower grassed area as central node</li> <li>- In selected locations to south lower foreshores</li> </ul> Planting to be subject to consultation with broad representation of local residents and park users <ul style="list-style-type: none"> <li>- Any Casuarina removal subject to replacement planting in accordance with planting zones - Appendix 4)</li> </ul> Potential community involvement (eg planting days)	Medium term	Visual experience reflects original design intent
Climbing Fig managed for optimum health	10.810 Provide regular maintenance / removal to Climbing Fig to protect condition of walling and optimise Fig health	Ongoing	Ongoing health of planting
Improved planting to central parking area and provision of screen to upper path	10.11 Replant slopes below parking area <ul style="list-style-type: none"> <li>- Replant lower slope to reflect original scheme and provide visual buffer</li> </ul>	Short term	Visual experience reflects original design intent
Original planting scheme and character to foreshore	10.12 Manage foreshore Casuarina stands <ul style="list-style-type: none"> <li>- management of foreshore stands in liaison with Landscape Architect to balance views and shade &amp; respect original scheme</li> </ul>	Short term	Visual experience reflects original design intent

## 7.0 STRATEGY AND ACTION PLAN

Objectives & Performance targets	Strategies to achieve objectives and performance targets	Priority	Performance Monitoring / Evaluation
Peacock Point			
Planting character more in keeping with Illoura Reserve	10.13 Progressively adapt planting scheme to be more complementary to Illoura Reserve <ul style="list-style-type: none"> <li>- Community consultation</li> <li>- Selective removal and replanting</li> <li>- selective light canopied tree planting</li> <li>- improved understorey planting to Fig</li> </ul>	Medium term	Better integration with Illoura Reserve character  Improved views to point from harbour
Visual Impact of stone walls reduced	10.14 Stone walls are significantly different in fabric / character to Illoura Reserve <ul style="list-style-type: none"> <li>- Plant climbing Fig adjoining wall to reflect that to Illoura Reserve</li> </ul>	Short term	Improved views to point from harbour
<b>11. SUSTAINABILITY</b>			
Sustainable materials use	11.1 Use recycled materials where possible to park improvement works	Ongoing	Maximise percentage of recycled materials used
Recycled water for toilet flush	11.2 Implement recycled water supply to upgrading of toilet facilities adjoining Thornton Park.	Medium term	Reduced potable water use
<b>12. SAFETY AND SECURITY</b>			
Provide compliant barriers to path edge where required	12.1 Provide raised wall edge to upper path	Medium term	Compliant edge provided
	12.2 Upgrade existing barrier to harbour edge at Thornton Park promenade	Medium term	Compliant edge provided Better quality barrier treatment
Maintain character of bushland reserve foreshore	12.3 Recognise importance of open foreshore edge to Illoura Reserve character - paved path is set back from waters edge by gravel margin adjoining seawall Low bench seating in gravel zone	Ongoing	Informal water edge character maintained
Balanced approach to sight lines and surveillance	12.4 Progressive restoration of original design scheme strategy of sequence of closed and open spaces through vegetation - integrate with consultation to increase community understanding	Ongoing	Experience of planting forming spaces is restored to upper path
<b>13. MANAGEMENT &amp; MAINTENANCE</b>			
Authorise appropriate leases and licences that complement reserve values and in accordance w POM	13.1 No leases / licences are authorised by this plan of management	Ongoing	Appropriate use of reserves
Park booking for events facilitated	13.2 Park use for minor events through bookings is sustained: <ul style="list-style-type: none"> <li>- protocols for site setup, control, and clean up</li> <li>- with consideration of impacts on other park users and park environment</li> </ul>	Ongoing	Events facilitated in complement to other park use / with minimal impact

Objectives & Performance targets	Strategies to achieve objectives and performance targets	Priority	Performance Monitoring / Evaluation
Effective park maintenance	13.3 Responsive park maintenance continued for days to day park management	Ongoing	Complaints decreased
	13.4 Provide event specific maintenance for during and after major events		Complaints decreased
Improved management of fishing use on site	13.5 Fishing management <ul style="list-style-type: none"> <li>- Liaison and consultation with fishing users</li> <li>- Information signage</li> <li>- Disposal system at foreshore</li> </ul>	Short term	Reduced problems with fishing use and related litter issues
Effective maintenance in particular tree management	13.6 Development of a prescriptive and documented maintenance regime for Illoura Reserve is required in the short term particularly in relation to managing vegetation within the reserves. This provides recognition of the significance of the park locally as well as promoting it's iconic status on Sydney Harbour	Short term	effective management of views and view issues

On the following page Figure 20 Illustrates locations of the actions as listed in this Action Plan

## 7.0 STRATEGY AND ACTION PLAN



Figure 20: Action Key Plan  
Source: EP

## 8.0 MASTERPLAN

### 8.1 Generally

The masterplan drawing set following illustrates the implementation of the strategies outlined in section 7.0. The plan also shows the public domain works being implemented on 2-8 Weston Street to explain the integration of this key foreshore site and the relationships of access and public space.

## 9.1 Appendix 1 Public Exhibition written responses

### Summary of Written Submissions received on Balmain East – Initial Consultation on Plan of Management

	Date Received	Submitter Name	Category	Issue Raised	Action
1	31/10/2011	Local resident	Park User	<ul style="list-style-type: none"> <li>• Illoura Reserve could become a natural, botanical compliment to the Botanical Gardens located to the east of Barangaroo</li> <li>• Create themes within the park. Pockets of modern day exotics, creating a transition zone leading from and to Barangaroo, tease the senses with some highly fragrant plants, a reflection of European settlement and a blend of indigenous flora representing the centuries of aboriginal occupation of Sydney.</li> <li>• The present timber platform which provides an opportunity to enjoy this "active" view of the harbour and Sydney Harbour Bridge, needs to be replaced. Opportunity to replace it with an organic structure, something which reflects Balmain's colourful working class/ industrial history.</li> <li>• provision of a family play area within Illoura Reserve . An area which is safe and protected from the elements. An excellent example of the latest play concept can be seen at Epping Oval in Norfolk Road, Epping</li> <li>• opportunity to introduce the use of recycled water, as an entertaining, cooling option during warmer days and a calming, visual effect during other times? Do you consider allocating a small portion of the public space to the establishment of a public vegetable garden or allotment.</li> <li>• The carparking area needs to be resurfaced and better managed.</li> <li>• A security management plan for the park needs to be created and implemented.</li> <li>• Lighting needs to be improved, more environmentally friendly and yet not invasive on the surrounding residents.</li> </ul>	
2	21/11/2011	Local resident	Park User	<ul style="list-style-type: none"> <li>• Playground equipment suitable for a wider range of age groups. Currently the equipment is very dated and targets younger children</li> <li>• landscaping surrounding the playground at Illoura Res is in a poor state of repair</li> <li>• anti social behaviour by some fishermen is an issue. Not sure if bins closer to where they fish will help but the breaking of living branches for firewood, public defecation and the use of hooks suspended from branches to secure tarps is common place</li> <li>• Provide public toilets at Peacock point</li> <li>• park seating at Illoura Res is limited and dated.</li> <li>• Lookes Ave park is under utilised.</li> </ul>	
3	29/08/2011  15/11/2011	Local resident	Park User	<ul style="list-style-type: none"> <li>• The removal of the trees was the first sign of any improvement to that park. It has so much potential to be a favourite spot for park goers.</li> <li>• no additional tree plantings</li> <li>• like to ask for the removal of another tree situated at the bottom of Pearson Street, East Balmain. The problem is it drops seeds on the stairs and pathway to Weston Street and create a very slippery surface</li> <li>• object to the planting of any trees. Low growing shrubs and bushes are fine, however any more large trees will create unwanted shade</li> <li>• wish to apply for the removal of more of the larger trees.</li> </ul>	<ul style="list-style-type: none"> <li>• the future tree management including possible further removals and pruning as well as setting up a masterplan for any plantings in the park. Council is committed to restoring the park to the manner in which its designer Bruce Mackenzie intended.</li> <li>• Council has funds in this year's budget to replace the carpark fence off Edward St as well as investigations into the removal and replacement of some of the deteriorating timber retaining walls.</li> <li>• the landscape works at 2-8 Weston St and the refurbishment of the Bell's Store and their inclusion into Illoura Reserve will provide further amenity improvements to the area</li> </ul>



## 9.0 APPENDIX

	Date Received	Submitter Name	Category	Issue Raised	Action
4	19/11/2011	Local resident	Park User	<ul style="list-style-type: none"> <li>replanting will be done with care and consideration.</li> <li>screening to allow partial views will not be overdone</li> <li>oppose to suggested Angophoras plantings, felt somewhat reassured that there would be community consultation on the heritage, but am concerned this has not yet occurred while the contract has been awarded and underway (proceeding well and thoughtfully incidentally).</li> <li>lopping would be done to preserve the views</li> <li>Councils seem to have an antagonistic attitude to those who have views as if their only concern is for themselves rather than the views being for everyone</li> <li>the plan being so manicured rather than continuing the more natural context of what is now there</li> <li>Please have the meeting as promised to discuss what will be planted</li> </ul>	
5	11/11/2011	Local resident	Park User	<ul style="list-style-type: none"> <li>Bell's Foreshore and Illoura Reserve should form part of the one park and that its development should be sympathetic to the whole area.</li> <li>Existing parks are heavily used on fine weekends for picnics, sunbaking, children playing ball games and with kites</li> <li>Existing parks are used every day for access to the streets to go to and from ferries and buses and for dog walking</li> <li>are used on occasions for school activities, functions, weddings and large parties</li> <li>are heavily used for such events as New Year Eve Fireworks displays</li> <li>permit young children to use the playgrounds throughout the week</li> <li>attract fishing from the edge of the parks as a popular pastime</li> <li>do suffer when people do not clear up after their use of the parks – clearing up after picnics and fishing needs to be done as soon as possible after the event and, on some occasions people tend to leave their garbage in the park or on its perimeter, especially if the bins are full and not close to where people exit the park</li> <li>Over the years the trees planted in the Peacock Point and Illoura Reserves have grown to such an extent that their foliage has become dense and obstructs the views that used to exist of the water from the streets and properties around the park</li> <li>appreciative of the removal of certain marked trees this year even though previous views of the Sydney Harbour Bridge have not been restored in most cases</li> <li>Concern is expressed that the planting of any replacement trees will again obstruct any remaining views</li> <li>all future tree planting in these parks should be designed to provide shade immediately beneath the tree; allow park users to sit in the sun around and between the trees; not obstruct views of the harbour from streets and properties around the parks; not obstruct views from the ferries and boats using the harbour of the streets and properties in the area surrounding the park; allow for children to run and play, fly kites, play ball games; provide for good sight lines for parents and other minders of their children while playing</li> <li>there has been an increased usage of the playground and surrounding area since the trees have been recently pruned/removed as this related directly to the amount of sunlight entering the playground area</li> <li>the Draft Park Plans of Management should state that views should not be obstructed by very large trees being planted in parks (such as Angophora Costata and Black Butt Eucalyptus or Moreton Bay Figs)</li> <li>existing trees should be thinned or pruned to prevent overlapping of canopies and resultant obstruction of views</li> <li>plantings should be of single trees through which the harbour can be seen and preferably of lower flowering trees to support native honey-eating birds</li> <li>trees should be natives but not be of the varieties, such as Angophoras, that tend to drop their branches for this would be a hazard to all park users</li> <li>existing trees in the parks be inspected and trimmed as necessary on a yearly basis - lower limbs (to five metres) to allow sunshine in early morning and late afternoon to stream through park and for views of the Harbour and its foreshore to be seen from the surrounding streets. As well, higher tree limbs should also be trimmed so they don't tangle with each other causing the tree canopy to become so dense it obstructs sunlight and any glimpses the Harbour Bridge</li> </ul>	

	Date Received	Submitter Name	Category	Issue Raised	Action
				<ul style="list-style-type: none"> <li>dead trees and branches be removed as soon as possible</li> <li>Council could consider the establishment of a Balmain East Parks Committee to facilitate consultation on future tree plantings.</li> </ul>	
6	13/11/2011	Local resident	Park User	<ul style="list-style-type: none"> <li>Bell's Foreshore and Illoura Reserve should form part of the one park and that its development should be sympathetic to the whole area.</li> <li>Existing parks are heavily used on fine weekends for picnics, sunbaking, children playing ball games and with kites</li> <li>Existing parks are used every day for access to the streets to go to and from ferries and buses and for dog walking</li> <li>are used on occasions for school activities, functions, weddings and large parties</li> <li>are heavily used for such events as New Year Eve Fireworks displays</li> <li>permit young children to use the playgrounds throughout the week</li> <li>attract fishing from the edge of the parks as a popular pastime</li> <li>do suffer when people do not clear up after their use of the parks – clearing up after picnics and fishing needs to be done as soon as possible after the event and, on some occasions people tend to leave their garbage in the park or on its perimeter, especially if the bins are full and not close to where people exit the park</li> <li>Over the years the trees planted in the Peacock Point and Illoura Reserves have grown to such an extent that their foliage has become dense and obstructs the views that used to exist of the water from the streets and properties around the park</li> <li>appreciative of the removal of certain marked trees this year even though previous views of the Sydney Harbour Bridge have not been restored in most cases</li> <li>Concern is expressed that the planting of any replacement trees will again obstruct any remaining views</li> <li>all future tree planting in these parks should be designed to provide shade immediately beneath the tree; allow park users to sit in the sun around and between the trees; not obstruct views of the harbour from streets and properties around the parks; not obstruct views from the ferries and boats using the harbour of the streets and properties in the area surrounding the park; allow for children to run and play, fly kites, play ball games; provide for good sight lines for parents and other minders of their children while playing</li> <li>there has been an increased usage of the playground and surrounding area since the trees have been recently pruned/removed as this related directly to the amount of sunlight entering the playground area</li> <li>the Draft Park Plans of Management should state that views should not be obstructed by very large trees being planted in parks (such as Angophora Costatas and Black Butt Eucalyptus or Moreton Bay Figs)</li> <li>existing trees should be thinned or pruned to prevent overlapping of canopies and resultant obstruction of views</li> <li>plantings should be of single trees through which the harbour can be seen and preferably of lower flowering trees to support native honey-eating birds</li> <li>trees should be natives but not be of the varieties, such as Angophoras, that tend to drop their branches for this would be a hazard to all park users</li> <li>existing trees in the parks be inspected and trimmed as necessary on a yearly basis - lower limbs (to five metres) to allow sunshine in early morning and late afternoon to stream through park and for views of the Harbour and its foreshore to be seen from the surrounding streets. As well, higher tree limbs should also be trimmed so they don't tangle with each other causing the tree canopy to become so dense it obstructs sunlight and any glimpses the Harbour Bridge</li> <li>dead trees and branches be removed as soon as possible</li> <li>Council could consider the establishment of a Balmain East Parks Committee to facilitate consultation on future tree plantings.</li> </ul>	<ul style="list-style-type: none"> <li>Council will not be accomodating the removal of the proposed landscpae trees at 2-8 Weston Street.</li> </ul>
7	28/10/2011	Local resident	Park User	<ul style="list-style-type: none"> <li>Designated sections for "kicking footwalks"</li> <li>Personal trainers to pay for use of area</li> <li>Provide low growing shrubs / plants / rockeries</li> <li>Trees removed as "unsuitable" provided some shelter from strong inds, especially NE – numerous walkers need shelter of some kind</li> </ul>	

## 9.0 APPENDIX

	Date Received	Submitter Name	Category	Issue Raised	Action
8	14/11/2011	Local resident	Park User	<ul style="list-style-type: none"> <li>Bell's Foreshore and Illoura Reserve should form part of the one park and that its development should be sympathetic to the whole area.</li> <li>Existing parks are heavily used on fine weekends for picnics, sunbaking, children playing ball games and with kites</li> <li>Existing parks are used every day for access to the streets to go to and from ferries and buses and for dog walking</li> <li>are used on occasions for school activities, functions, weddings and large parties</li> <li>are heavily used for such events as New Year Eve Fireworks displays</li> <li>permit young children to use the playgrounds throughout the week</li> <li>attract fishing from the edge of the parks as a popular pastime</li> <li>do suffer when people do not clear up after their use of the parks – clearing up after picnics and fishing needs to be done as soon as possible after the event and, on some occasions people tend to leave their garbage in the park or on its perimeter, especially if the bins are full and not close to where people exit the park</li> <li>Over the years the trees planted in the Peacock Point and Illoura Reserves have grown to such an extent that their foliage has become dense and obstructs the views that used to exist of the water from the streets and properties around the park</li> <li>appreciative of the removal of certain marked trees this year even though previous views of the Sydney Harbour Bridge have not been restored in most cases</li> <li>Concern is expressed that the planting of any replacement trees will again obstruct any remaining views</li> <li>all future tree planting in these parks should be designed to provide shade immediately beneath the tree; allow park users to sit in the sun around and between the trees; not obstruct views of the harbour from streets and properties around the parks; not obstruct views from the ferries and boats using the harbour of the streets and properties in the area surrounding the park; allow for children to run and play, fly kites, play ball games; provide for good sight lines for parents and other minders of their children while playing</li> <li>there has been an increased usage of the playground and surrounding area since the trees have been recently pruned/removed as this related directly to the amount of sunlight entering the playground area</li> <li>the Draft Park Plans of Management should state that views should not be obstructed by very large trees being planted in parks (such as Angophora Costatas and Black Butt Eucalyptus or Moreton Bay Figs)</li> <li>existing trees should be thinned or pruned to prevent overlapping of canopies and resultant obstruction of views</li> <li>plantings should be of single trees through which the harbour can be seen and preferably of lower flowering trees to support native honey-eating birds</li> <li>trees should be natives but not be of the varieties, such as Angophoras, that tend to drop their branches for this would be a hazard to all park users</li> <li>existing trees in the parks be inspected and trimmed as necessary on a yearly basis - lower limbs (to five metres) to allow sunshine in early morning and late afternoon to stream through park and for views of the Harbour and its foreshore to be seen from the surrounding streets. As well, higher tree limbs should also be trimmed so they don't tangle with each other causing the tree canopy to become so dense it obstructs sunlight and any glimpses the Harbour Bridge</li> <li>dead trees and branches be removed as soon as possible</li> <li>Less trees and more sun in the park, no additional tree plantings</li> <li>More parking</li> <li>Provide wheel chair access from carpark to park</li> </ul>	
9	7/12/2011	Local resident	Park User	<ul style="list-style-type: none"> <li>The noisy council basket ball court is next to our property</li> <li>Our side wall is used to bounce ball off, basket ball hoop should be relocated elsewhere in the park</li> <li>This same court attracts drinkers at night time,they also use the front of my house as a Toilet, using the Wooden Pylon fence located out side my window, this fence is also used to stand on our balcony Rail,as you can see we have a few issues arising out of the Courts being there.</li> </ul>	<ul style="list-style-type: none"> <li>future park improvements. This will include future landscape options for the basketball court and improvement options to this space within the park</li> <li>include options for relocating the basketball court to another location</li> </ul>

	Date Received	Submitter Name	Category	Issue Raised	Action
					<p>of the park as well as upgrading the existing basketball space for informal recreation and seating</p> <ul style="list-style-type: none"> <li>At the recent community meeting held at the park on the 19th December 2011 there was wide community support expressed for the retention of the basketball court and its use for recreation. The needs of teenagers as local residents and park users of the park was also expressed and is also a valid issue.</li> <li>there may some landscape options open Council for addressing this issue in the context of the master planning process and ongoing community consultation i.e. a review of where lighting is situated etc.</li> </ul>

## 9.2 Appendix 2 Community Consultation sessions

Meeting notes the consultation sessions undertaken are provided following.

9.3 Appendix 3 Site survey



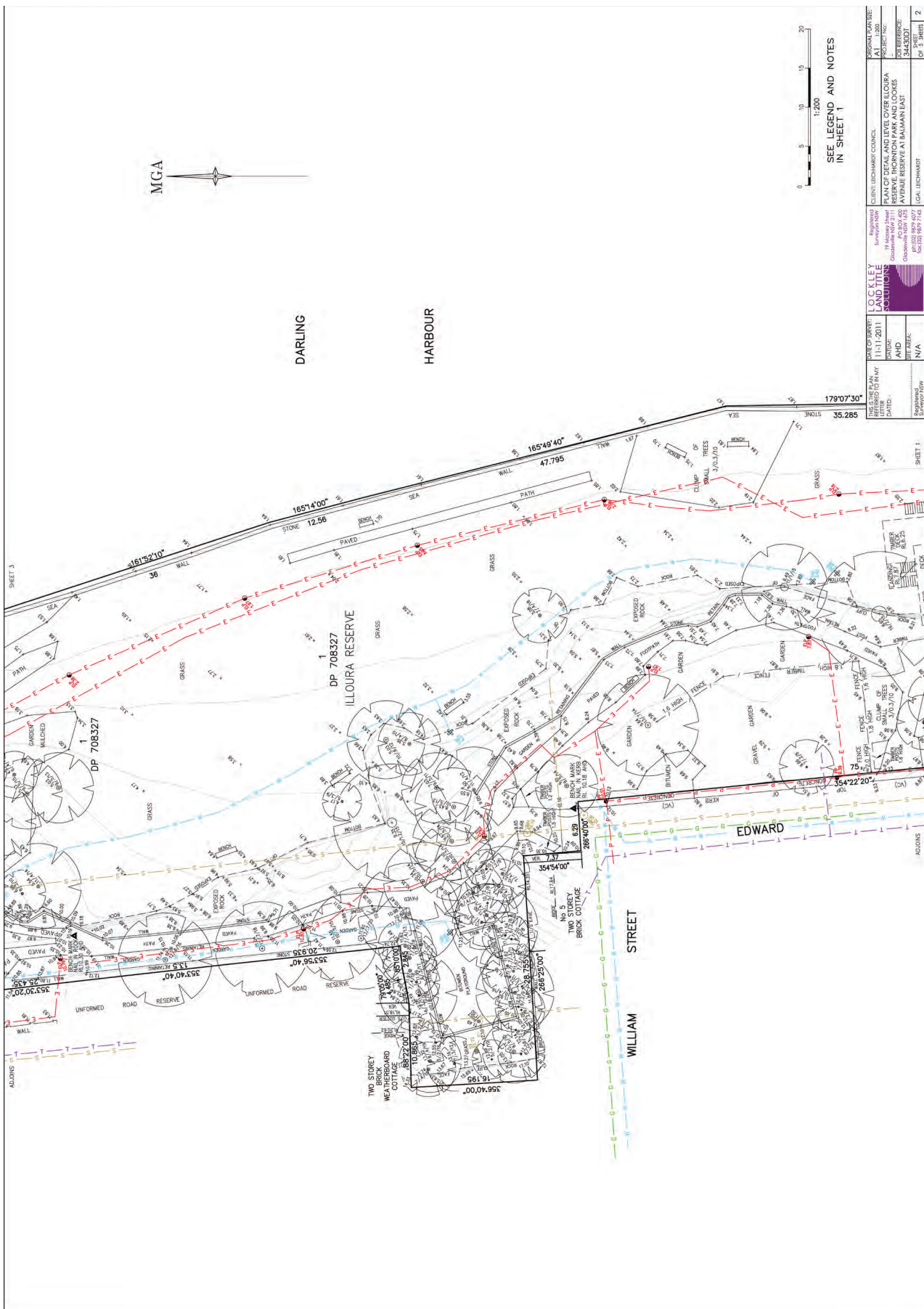
## 9.0 APPENDIX







## 9.0 APPENDIX







9.4 Appendix 4 Restorative planting plans





NOTE:  
PLANT QUANTITIES  
TO BE CONFIRMED ON SITE  
PLANT SET OUT IN A RANDOM  
CONFIGURATION

REMOVE ALL WEEDS AND EXOTIC PLANTS  
THROUGHOUT SITE.

Legend

- Proposed canopy
- Existing trees
- Proposed planting refer schedule
- Proposed native grass planting refer schedule
- Mass planting bed mix of Indigenous shrubs and grasses refer schedule
- Infill planting refer schedule

RESTORATIVE PLANTING SCHEDULE							
SYM	BOTANICAL NAME	COMMON NAME	POT SIZE	HEIGHT AT MATURITY	SPREAD AT MATURITY	PLANTING SPACING	QUANTITY
Trees							
All	Allocasuarina littoralis	Black she oak	75L	6-8m	4-5m	AS SHOWN	8
AC	Angophora costata	Smoothed bark apple	75L	8-18m	6-10m	AS SHOWN	9
Cs	Casuarina glauca	swamp oak	75L	6-8m	4-5m	AS SHOWN	28
EH	Eucalyptus haemastoma	scribbly gum	75L	5-15m	4-13m	AS SHOWN	3
ER	Eucalyptus robusta	swamp mahogany	75L	20-25m	10-20m	AS SHOWN	17
Pu	Pittosporum undulatum	Sweet pittosporum	75L	5-8m	3-5m	AS SHOWN	1
SYM	BOTANICAL NAME	COMMON NAME	POT SIZE	HEIGHT AT MATURITY	SPREAD AT MATURITY	PLANTING SPACING	QUANTITY
CARPARK GARDEN BED 2							
Shrubs							
	Banksia asplenifoli	dwarf banksia	15L	1-2m	2.0m	1.0m	18
	Banksia ericifolia	heath banksia	15L	4.0m	2.0m	2.0m	1
	Banksia integrifolia	coast banksia	15L	3-5m	2.0m	2.0m	1
	Banksia marginata	silver banksia	15L	4-5m	3-5m	5m	1
	Banksia spinulosa	spine leaved banksia	15L	1-2m	2-3m	2.0m	18
	Correa alba	white correa	15L	.5-1m	1.5m	1.0m	18
	Leptospermum grandiflorum	woolly tea tree	15L	1.5-6m	2-3m	3.0m	18
	Leptospermum juniperinum	prickly tea tree	15L	2-3m	2-3m	2.0m	1
	Leptospermum laevigatum	coast tea tree	15L	2-4m	3-5m	3.0m	18
	Leptospermum polygalifolium	yellow swamp tea tree	15L	2-6m	3-5m	3.0m	18
	Hakea salicifolia	swamp hakea	15L	5-12m	4-8m	3.0m	1
	Hakea tereifolia	dagger hakea	15L	1.0m	.8-1.5m	1.0m	18
	Melaluca armillaris	Bracelet honey-myrtle	200mm	4-7m	6-8m	5m	1
	Melaluca ericifolia	Swamp paperbark	200mm	3-6m	2-5m	3.0m	1
	Melaluca hypericifolia	red flowering paperbark	200mm	2.5-4m	2.5-4m	3.0m	1
	Westringia fruticosa	coastal rosemary	200mm	.5-1m	1.0m	0.8m	18
Grasses & Groundcovers							
	Lomandra longifolia	spiny head matt rush	200mm	.5-1m	1.0m	0.8m	18
SYM	BOTANICAL NAME	COMMON NAME	POT SIZE	HEIGHT AT MATURITY	SPREAD AT MATURITY	PLANTING SPACING	QUANTITY
CARPARK GARDEN BED 2							
Shrubs							
Csp	Callistemon citrinus	crimson bottlebrush	15L	2-4m	2.0m	2.0m	3
	Callistemon linearis	narrow leaved bottlebrush	15L	1.5-3m	2-3m	2.0m	50
	Callistemon salignus	Pink tip bottlebrush	15L	1-2m	2.0m	2.0m	50
Er	Elaeocarpus reticulatus	Blueberry ash	15L	5-8m	2-3m	2.0m	5
	Leptospermum grandiflorum	woolly tea tree	15L	1.5-6m	2-3m	3.0m	50
	Leptospermum juniperinum	prickly tea tree	15L	2-3m	2-3m	2.0m	50
	Leptospermum laevigatum	coast tea tree	15L	2-4m	3-5m	3.0m	50
	Leptospermum polygalifolium	yellow swamp tea tree	15L	2-6m	3-5m	3.0m	50
Grasses & Groundcovers							
	Lomandra longifolia	spiny head matt rush	200mm	.5-1m	1.0m	0.8m	500

BALMAIN EAST - ILLOURA RESERVE

PLANTING RESTORATION PLAN

- GENERAL NOTES
1. Do not scale of drawings. Follow written dimensions. If in doubt obtain written advice from the Superintendent.
  2. Verify all dimensions on site.
  3. Refer to legend for all symbol and code keys.
  4. Read in conjunction with the specifications
  5. Read in conjunction with all Civil and Electrical Engineer drawings and specifications.
  6. Read in conjunction with all associated drawings

PROJECT:

BALMAIN EAST & KING GEORGE PARK LANDSCAPE MASTERPLAN

PREPARED FOR:



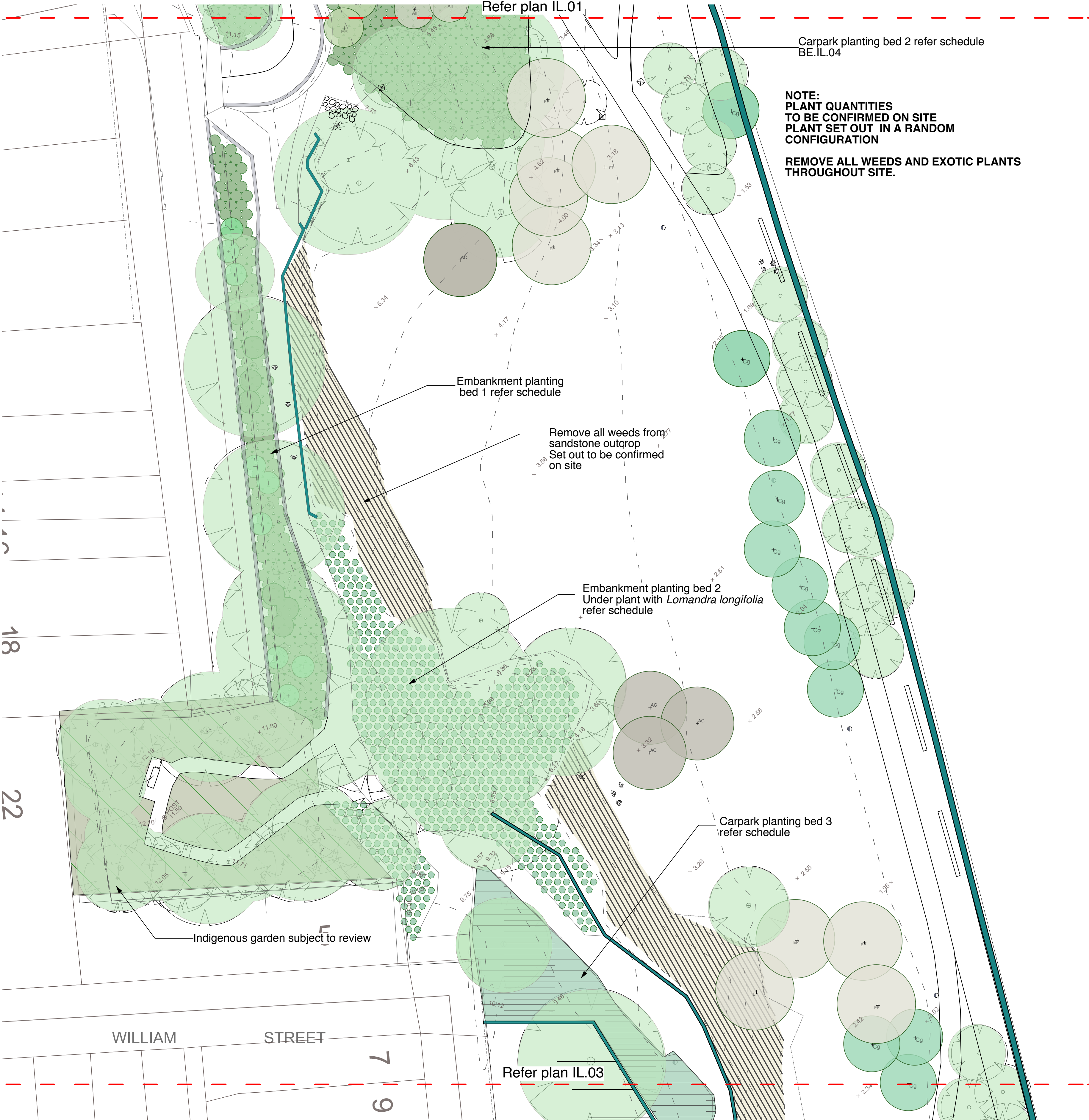
PREPARED BY:

Environmental Partnership

Lvl 3 suite 3.01 22-36 Mountain street Ultimo 2007  
Ph: (02) 9555 1033 Fax: (02) 98185292  
Email: admin@epnsw.com.au  
ABN 53 086 175 437







RESTORATIVE PLANTING SCHEDULE							
SYM	BOTANICAL NAME	COMMON NAME	POT SIZE	HEIGHT AT MATURITY	SPREAD AT MATURITY	PLANTING SPACING	QUANTITY
Trees							
All	Allocasuarina littoralis	Black she oak	75L	6-8m	4-5m	AS SHOWN	8
AC	Angophora costata	Smoothed bark apple	75L	8-18m	6-10m	AS SHOWN	9
Cs	Casuarina glauca	swamp oak	75L	6-8m	4-5m	AS SHOWN	28
EH	Eucalyptus haemastoma	scribbly gum	75L	5-15m	4-13m	AS SHOWN	3
ER	Eucalyptus robusta	swamp mahogany	75L	20-25m	10-20m	AS SHOWN	17
Pu	Pittosporum undulatum	Sweet pittosporum	75L	5-8m	3-5m	AS SHOWN	1

SYM	BOTANICAL NAME	COMMON NAME	POT SIZE	HEIGHT AT MATURITY	SPREAD AT MATURITY	PLANTING SPACING	QUANTITY
EMBANKMENT PLANTING 1							
Shrubs							
	Banksia asplenifoli	dwarf banksia	15L	1-2m	2.0m	1.0m	16
	Banksia ericifolia	heath banksia	15L	4.0m	2.0m	2.0m	2
	Banksia integrifolia	coast banksia	15L	3-5m	2.0m	2.0m	2
	Banksia marginata	silver banksia	15L	4-5m	3-5m	5m	1
	Banksia spinulosa	spine leaved banksia	15L	1-2m	2-3m	2.0m	16
	Correa alba	white correa	15L	.5-1m	1.5m	1.0m	16
	Leptospermum grandiflorum	woolly tea tree	15L	1.5-6m	2-3m	3.0m	1
	Leptospermum juniperinum	prickly tea tree	15L	2-3m	2-3m	2.0m	16
	Leptospermum laevigatum	coast tea tree	15L	2-4m	3-5m	3.0m	1
	Leptospermum polygalifolium	yellow swamp tea tree	15L	2-6m	3-5m	3.0m	2
	Hakea salicifolia	swamp hakea	15L	5-12m	4-8m	3.0m	2
	Hakea tereifolia	dagger hakea	15L	1.0m	8-1.5m	1.0m	16
	Melaluca armillaris	Bracelet honey-myrtle	200mm	4-7m	6-8m	5m	1
	Melaluca ericifolia	Swamp paperbark	200mm	3-6m	2-5m	3.0m	3
	Melaluca hypericifolia	red flowering paperbark	200mm	2.5-4m	2.5-4m	3.0m	1
	Westringia fruticosa	coastal rosemary	200mm	.5-1m	1.0m	0.8m	17
Grasses & Groundcovers							
	Lomandra longifolia	spiny head matt rush	200mm	.5-1m	1.0m	1.0m	100

SYM	BOTANICAL NAME	COMMON NAME	POT SIZE	HEIGHT AT MATURITY	SPREAD AT MATURITY	PLANTING SPACING	QUANTITY
EMBANKMENT PLANTING 2							
Grasses & Groundcovers							
	Lomandra longifolia	spiny head matt rush	200mm	.5-1m	1.0m	0.8m	651

SYM	BOTANICAL NAME	COMMON NAME	POT SIZE	HEIGHT AT MATURITY	SPREAD AT MATURITY	PLANTING SPACING	QUANTITY
CARPARK PLANTING 3							
Shrubs							
	Leptospermum grandiflorum	woolly tea tree	15L	1.5-6m	2-3m	3.0m	TBC ONSITE
	Leptospermum juniperinum	prickly tea tree	15L	2-3m	2-3m	2.0m	TBC ONSITE
	Leptospermum laevigatum	coast tea tree	15L	2-4m	3-5m	3.0m	TBC ONSITE
	Leptospermum polygalifolium	yellow swamp tea tree	15L	2-6m	3-5m	3.0m	TBC ONSITE

Legend

- Proposed canopy
- Existing trees
- Proposed planting refer schedule
- Proposed native grass planting refer schedule
- Mass planting bed mix of Indigenous shrubs and grasses refer schedule
- Infill planting refer schedule

BALMAIN EAST - ILLOURA RESERVE

PLANTING RESTORATION PLAN

GENERAL NOTES

1. Do not scale of drawings. Follow written dimensions. If in doubt obtain written advice from the Superintendent.
2. Verify all dimensions on site.
3. Refer to legend for all symbols and code keys.
4. Read in conjunction with the specifications
5. Read in conjunction with all Civil and Electrical Engineer drawings and specifications.
6. Read in conjunction with all associated drawings

PROJECT:

BALMAIN EAST & KING GEORGE PARK LANDSCAPE MASTERPLAN

PREPARED FOR:



PREPARED BY:

Environmental Partnership

Lvl 3 suite 3.01 22-36 Mountain street Ultimo 2007

Ph: (02) 9555 1033 Fax: (02) 98185292

Email: admin@epnsw.com.au

ABN 53 086 175 437







## 9.0 APPENDIX

- 9.5    Appendix 5    Site Assessment and Design Report - November 2012  
                             Bruce Mackenzie Landscape Architects



## **ILLOURA RESERVE**

**Leichhardt Council**

In conjunction with

**Environmental Partnership NSW**

February 2012

### **Bruce Mackenzie Design**

Po Box 601 Manly Australia 2095

Ph 02 9949 6260...[bmla@bigpond.net.au](mailto:bmla@bigpond.net.au)

## Design For Restoration





1970s



1980s



1990s

## ILLOURA RESERVE For Leichhardt Council In conjunction with Environmental Partnership NSW February 2012

### Background

Iloura Reserve (Peacock Point Park initially) was first designed and built in 1969-1970. It was a time when landscape projects were modest with small budgets and the term landscape architect was not yet recognised. One outcome was a low cost approach for the project which was built for \$75,000 including 6 months maintenance (approaching \$750,000 in the values of 2012). A bonus at that time, was the availability of dimension sandstone from demolition work around Sydney, a sign of the times when new development was at its peak and materials such as old sandstone were generally disregarded. The cost of transport was the basic purchase price. Similarly, used wharf piling, rejected telegraph poles and large baulk timber were relatively available and inexpensive.

The site in 1969 started as a harbour edge tip for disused building materials, not unusual at the time when such sites had not yet acquired the special attraction that environmental qualities would observe. They were seen as merely industrial. The development of the park, amongst other things, helped to change that attitude. Part of the park's new design style was to establish a harbourside and local indigenous landscape character which eventually proved to be favoured and popular. Forty years later that original style has diminished a little though the harbourside edge circumstances are still dominant and spectacular.

### A New Approach

The approach in 2012 is to recognise the park's new role and restore its qualities as a modern element in the current image of Leichhardt and Sydney. It is also now accompanied around the harbour with a variety of parklands designed by many landscape architectural firms during the last forty years which together provide a sparkling new vision for the Sydney Harbour environment. Some of the new ingredients recommended in this report reflect a measure of conformity with the general style that can be recognised in the new body of parklands that now exist. It encourages a more permanent quality to the various structures and details that have served the park well to date but are now exhausted and somewhat derelict.

Bruce Mackenzie  
Bruce Mackenzie Design





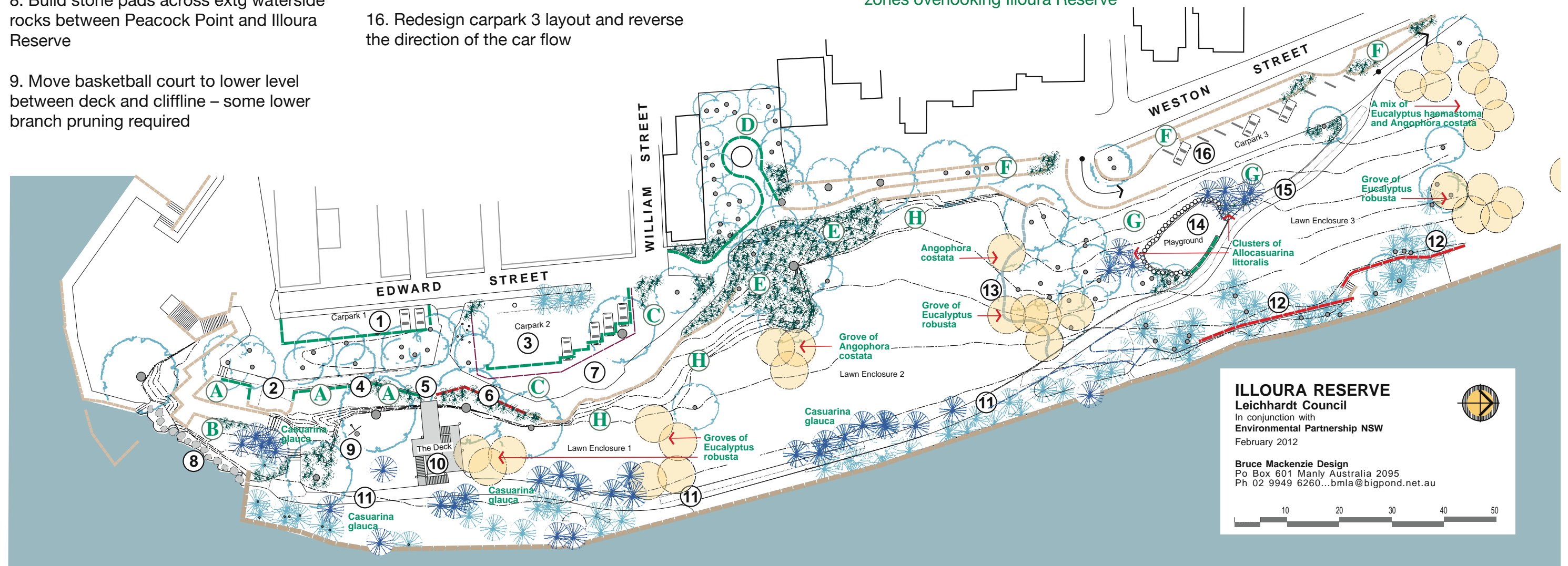


## Design Elements

1. Redefine original carpark—establish stone kerbing edges
2. Enlarge extg stone paving and wall surrounds
3. Design new carpark layout and replace timber fence – delete old pole clusters (three locations)
4. Install new stone kerbing wall and balustrade alongside cliff line
5. Install Timber Ramp at entry to deck structure – delete step
6. Install new stone wall to 1.0m height following slope
7. Part screen carpark 2 viewed from path
8. Build stone pads across extg waterside rocks between Peacock Point and Illoura Reserve
9. Move basketball court to lower level between deck and cliffline – some lower branch pruning required
10. The Deck: choose correct oilstain throughout – revise/cut plank and timber columns to an even and consistent layout – cap all timber posts in galvanised steel sheeting
11. Redesign and extend stone path along foreshore – some trees may be lost
12. Redesign/rebuild failed timber walls in stone
13. Install 300mm flat stone grass edge to extg and new tree planting following slope down to lower path
14. Playground – rebuild new pole edge wall and new stone kerb wall treatment
15. Stone path: rebuild and widen to match original path system
16. Redesign carpark 3 layout and reverse the direction of the car flow

## Planting Restoration

- A. Replant between cliffline and upper stone path
- B. Replant between cliffline and shoreline below path
- C. Replant between carpark 2 and upper clifftop path
- D. Develop a display garden of indigenous local species (in lieu of the basketball court)
- E. *Lomandra longifolia*: a replanting throughout this area according to available opportunities. *Lomandra longifolia* is a versatile plant, truck-proof and child-proof, able to accommodate difficult areas and path edges throughout site
- F. Remove weeds and garden plants: establish new indigenous planting to upper edge zones overlooking Illoura Reserve
- G. Replant slope from carpark 3 down to lower path
- H. Define certain cliff area zones where thin soil and weeds can be remove down to bare rock – finish with a water-blast treatment to establish a clean weed-free base. Needs to be carefully located and set out on site
- I. Remove all weeds and exotic plants throughout site. Follow the plant species list provided later and set out in accordance with the schematic layouts shown. Install new tree planting as shown on drawings:



### ILLOURA RESERVE

Leichhardt Council

In conjunction with  
Environmental Partnership NSW  
February 2012

Bruce Mackenzie Design  
Po Box 601 Manly Australia 2095  
Ph 02 9949 6260...bmla@bigpond.net.au









# Design Elements

1. Redefine original carpark—establish stone kerbing edges

2. Enlarge extg stone paving and wall surrounds

3. Design new carpark layout and replace timber fence – delete old pole clusters (three locations)

4. Install new stone kerbing wall and balustrade alongside cliff line

5. Install Timber Ramp at entry to deck structure – delete step

6. Install new stone wall to 1.0m height following slope

7. Part screen carpark 2 viewed from path

8. Build stone pads across extg waterside rocks between Peacock Point and Illoura Reserve
10. The Deck: choose correct oilstain throughout – revise/cut plank and timber columns to an even and consistent layout – cap all timber posts in galvanised steel sheeting

11. Redesign and extend stone path along foreshore – some trees may be lost

12. Redesign/rebuild failed timber walls in stone

13. Install 300mm flat stone grass edge to extg and new tree planting following slope down to lower path

14. Playground – rebuild new pole edge wall and new stone kerb wall treatment

15. Stone path: rebuild and widen to match original path system

16. Redesign carpark 3 layout and reverse the direction of the car flow

# Planting Restoration

- A. Replant between cliffline and upper stone path

B. Replant between cliffline and shoreline below path

C. Replant between carpark 2 and upper clifftop path

D. This area remains unchanged

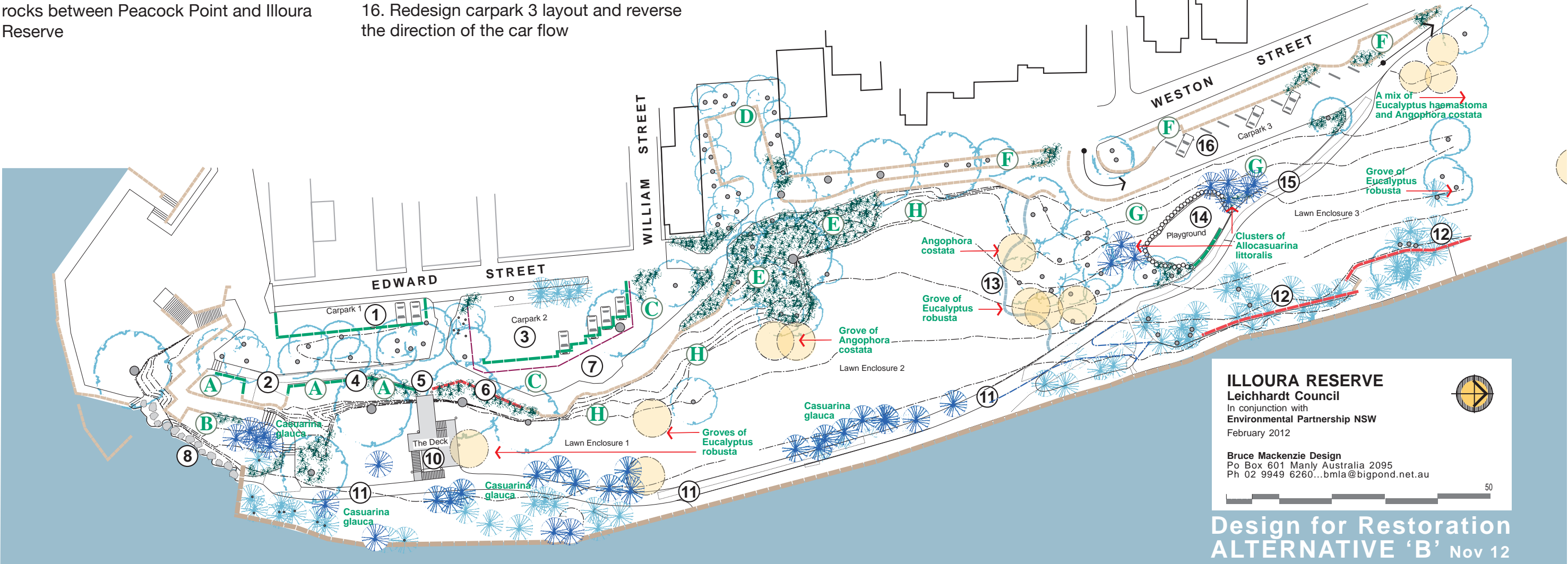
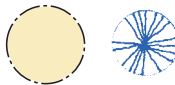
E. *Lomandra longifolia*: a replanting throughout this area according to available opportunities. *Lomandra longifolia* is a versatile plant, truck-proof and child-proof, able to accommodate difficult areas and path edges throughout site

F. Remove weeds and garden plants: establish new indigenous planting to upper edge zones overlooking Illoura Reserve

G. Replant slope from carpark 3 down to
- lower path

H. Define certain cliff area zones where thin soil and weeds can be remove down to bare rock – finish with a water-blast treatment to establish a clean weed-free base. Needs to be carefully located and set out on site

I. Remove all weeds and exotic plants throughout site. Follow the plant species list provided later and set out in accordance with the schematic layouts shown. Install new tree planting as shown on drawings:



**ILLOURA RESERVE**  
Leichhardt Council  
In conjunction with  
Environmental Partnership NSW  
February 2012

**Bruce Mackenzie Design**  
Po Box 601 Manly Australia 2095  
Ph 02 9949 6260...bmla@bigpond.net.au

Design for Restoration  
ALTERNATIVE 'B' Nov 12

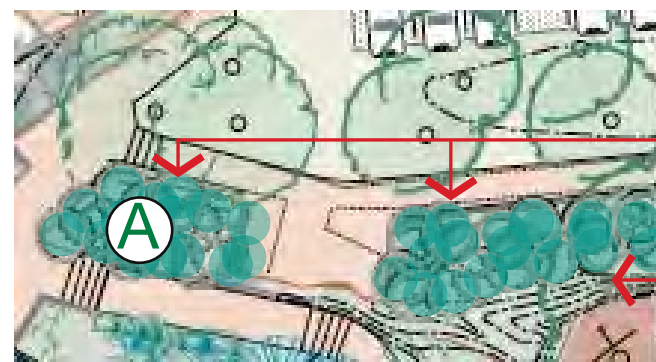
Planting List for Illoura Reserve

<i>Allocasuarina littoralis</i>	Black She Oak
<i>Angophora costata</i>	Smooth-barked Apple
<i>Banksia aspleniifoli</i>	Fern-leaved Banksia
<i>Banksia ericifolia</i>	Heath-leaved Banksia
<i>Banksia integrifolia</i>	Coast Banksia
<i>Banksia marginata</i>	Silver Banksia
<i>Banksia spinulosa</i>	Spine-leaved Banksia
<i>Callicoma serratifolia</i>	Black ‘Wattle’
<i>Callistemon citrinus</i>	Crimson Bottlebrush
<i>Callistemon linearis</i>	Narrow leaved Bottlebrush
<i>Callistemon salignus</i>	Pink-tip Bottlebrush
<i>Casuarina glauca</i>	Swamp Oak
<i>Correa alba</i>	White Correa
<i>Eucalyptus haemastoma</i>	Scribbly Gum
<i>Eucalyptus robusta</i>	Swamp Mahogany
<i>Elaeocarpus reticulatus</i>	Blueberry Ash
<i>Hakea salicifolia</i>	Swamp Hakea
<i>Hakea teretifolia</i>	Dagger Hakea
<i>Isolepis nodosus</i>	(syn. Scirpus nodosa) A rush
<i>Kunzea ambigua</i>	Tick Bush
<i>Leptospermum grandiflorum</i>	Woolly Tea-Tree
<i>Leptospermum juniperinum</i>	Prickly Tea-Tree
<i>Leptospermum laevigatum</i>	Coast Tea-Tree
<i>Leptospermum polygalifolium</i>	Yellow (swamp) Tea-Tree
<i>Lomandra longifolia</i>	Spiny-headed Mat-rush
<i>Melaleuca armillaris</i>	Bracelet Honey-myrtle
<i>Melaleuca ericifolia</i>	Swamp Paperbark
<i>Melaleuca hypericifolia</i>	Red-flowering Paperbark
<i>Pittosporum undulatum</i>	Sweet Pittosporum
<i>Westringia fruticosa</i>	Coastal Rosemary

Planting Details

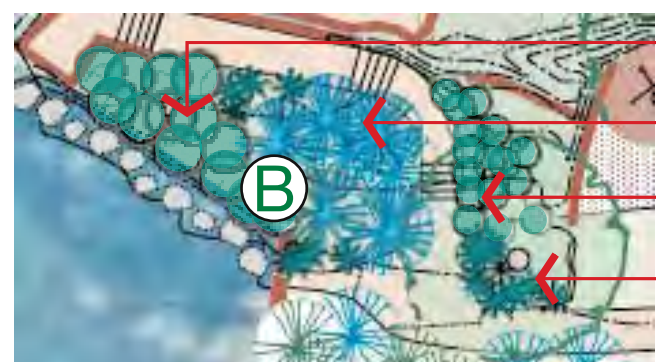
<ul style="list-style-type: none"><li>• Carry out clearing and repeated cultivation to the best standards removing all unwanted growth</li><li>• Add fertilizer to manufacturer’s recommendations, as blood and bone or equivalent, and slow-release pellets, to suit a native plants composition.</li></ul>	<ul style="list-style-type: none"><li>• Maintenance of Plants</li></ul> <p>Replace (if required) on a weekly basis, any failed plant material during the maintenance period, preferably for a six months term.</p>
<ul style="list-style-type: none"><li>• Plant Spacings:</li></ul> <p>Space according to size as in .5m to 1.0m for plants such as Lomandra longifolia.</p> <p>Larger material, leptospermum etc at .5m to 1.5m, averaging 1.0m centres.</p> <p>Tree planting largely as shown.</p>	<ul style="list-style-type: none"><li>• Fencing</li></ul> <p>Install light weight plastic fencing sufficient to deter random access during an establishment period of say one to two years (after the contract period). All planting below the three carparks will require this treatment.</p>
<ul style="list-style-type: none"><li>• Plant Setout</li></ul> <p>After determining plants quantities, set out randomly so that no obvious uniformity can be observed.</p>	
<ul style="list-style-type: none"><li>• Mulching</li></ul> <p>Mulch to a compacted depth of 75mm after planting (uncoloured woodchip-type material required).</p>	





Banksia species such as:  
*B. ericifolia*  
*B. asplenifolia*  
*B. marginata*  
*B. spinulosa*

*Lomandra longifolia* used in the shaded background of the extg *Ficus rubiginosa* trees

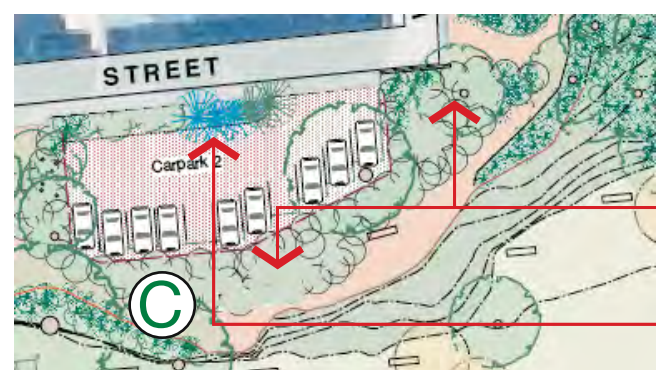


*Melaleuca ericifolia*

*Casuarina glauca*

*Westringia fruticosa*

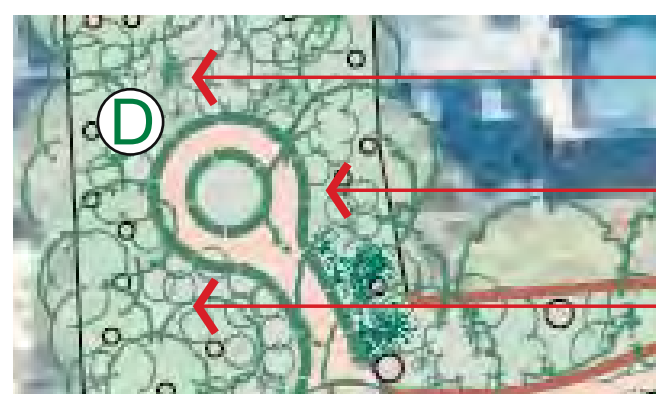
*Lomandra longifolia* used in the shaded zone under the extg *Ficus* tree and elsewhere on path edges



Retain extg *Melaleuca* specimens that conform to the planting scheme — remove all extraneous plants

Additional planting throughout will be *Leptospermum laevigatum*.

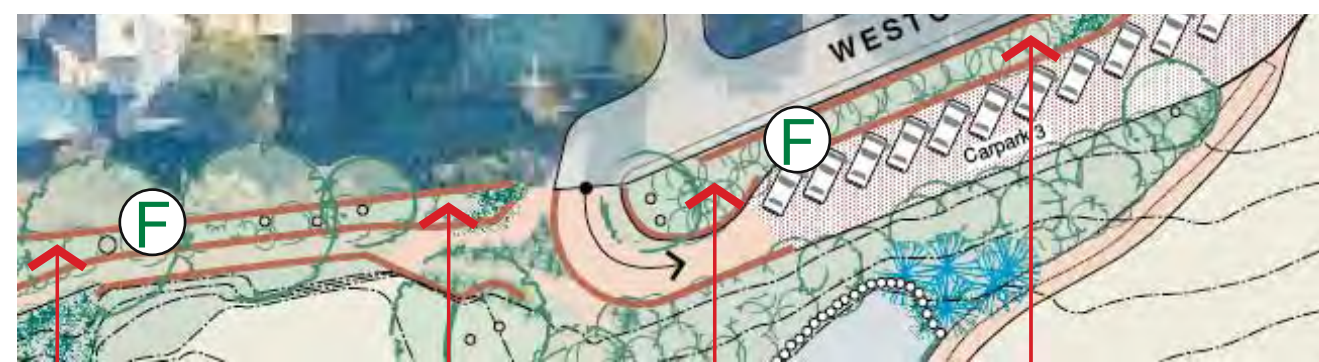
*Casuarina glauca* — 3 added



The plan here is to remove the basketball practice court and replace it with a pleasure garden of indigenous plants for park visitors. This will mean the engagement of a suitable horticultural person for selection and ongoing maintenance. Another alternative is to consider a transfer to a new home site use.

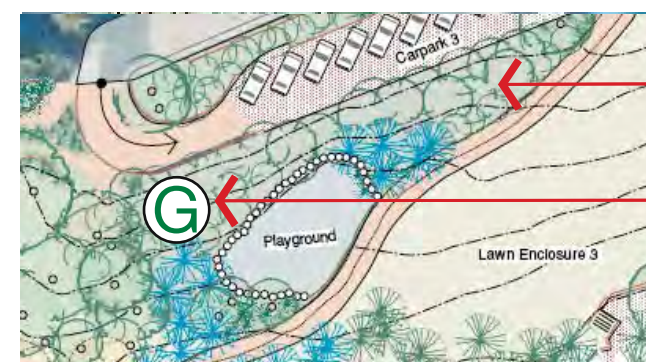


*Lomandra longifolia* is shown here as a fill-in plant to accommodate the rocky and shaded conditions under the extg trees. The *Lomandra* is reasonably child-proof and children can play and scramble without inflicting any harm. As a broad spreading group the plants are attractive and within reason can tolerate the harsh conditions.



These overview edges above, are intended to be a new planting of mixed species from 1.0m to 3.0m in height including:

*Banksia* spp, *Correa alba*, *Lomandra longifolia*, *Leptospermum* spp, *Hakea* spp, *Melaleuca* spp and *Westringia fruticosa*.

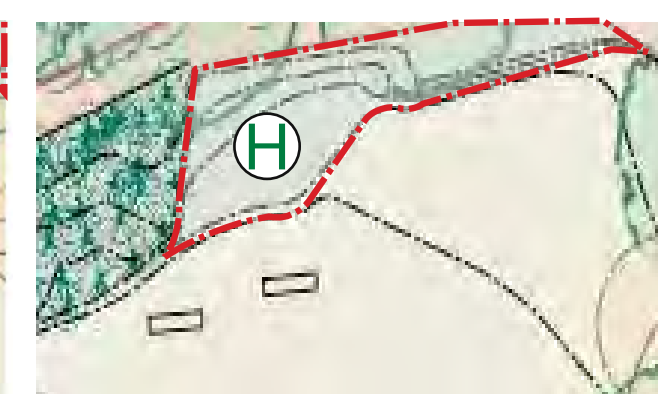
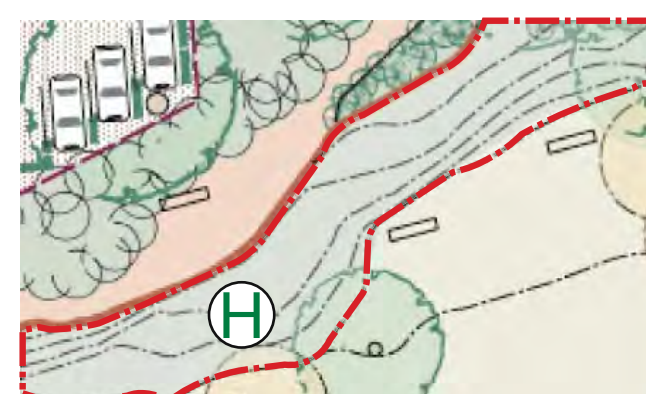


Replanting to form a thick dense cover of the following:

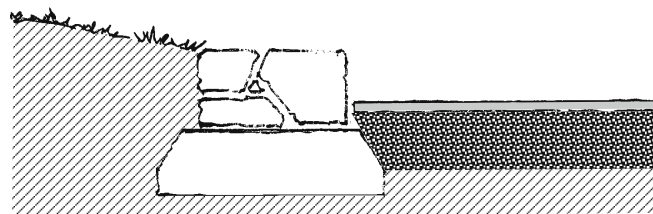
*Allocasuarina littoralis*, *Callistemon* spp, *Casuarina glauca*, *Elaeocarpus reticulatus*, *Leptospermum* spp, *Pittosporum undulatum* and *Lomandra longifolia*.

The areas shown below indicate cliff zones to be cleaned back to bare rock. This process is designed to delete shallow soil and unwanted weeds.

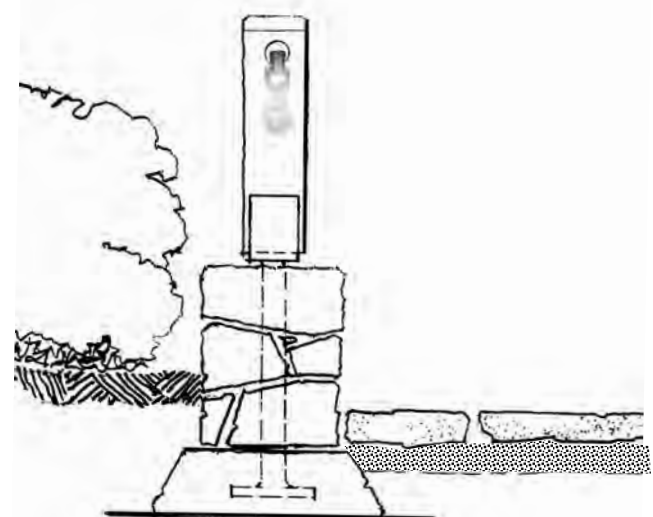
The sites will need to be carefully gauged and defined on site.





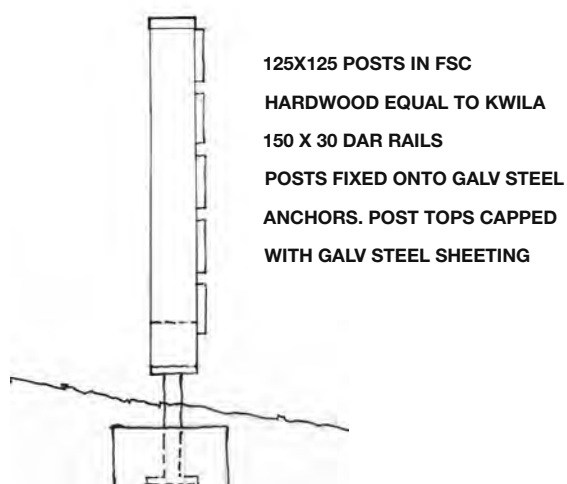
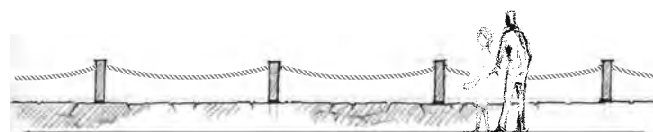
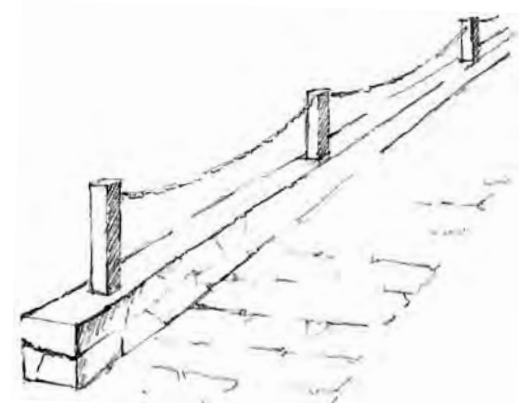


- Stone kerb wall to form car park edges and similar situations



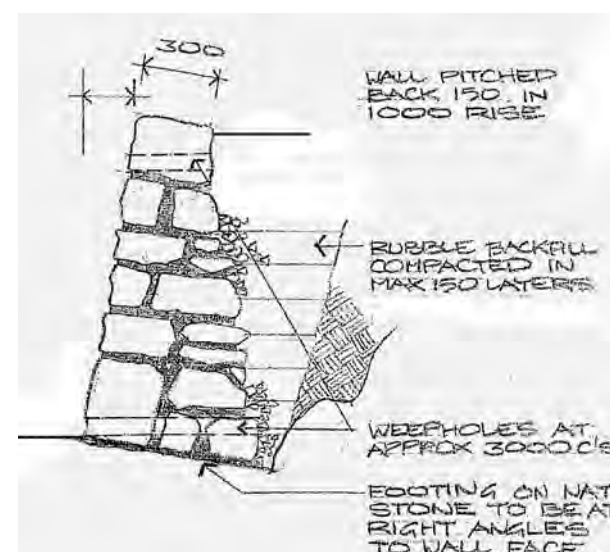
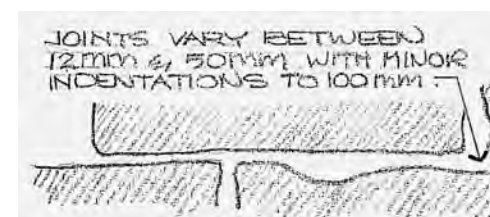
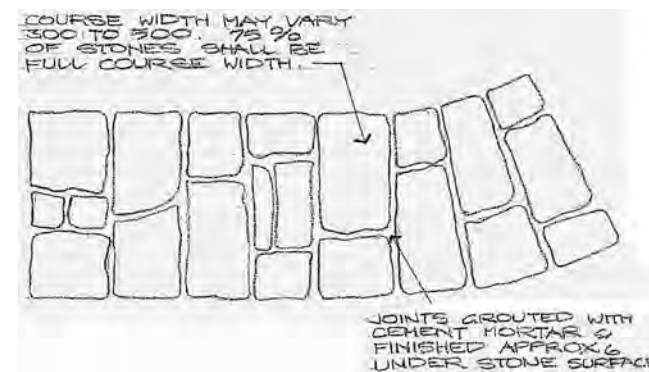
- Stone kerb wall and post and chain balustrade against cliff line exposure

Posts fixed onto galv steel anchors. Post tops capped with galv steel sheeting



125X125 POSTS IN FSC  
HARDWOOD EQUAL TO KWILA  
150 X 30 DAR RAILS  
POSTS FIXED ONTO GALV STEEL  
ANCHORS. POST TOPS CAPPED  
WITH GALV STEEL SHEETING

- 1.0m high timber fence against carpark 2 sheltering view up from cliff top promenade



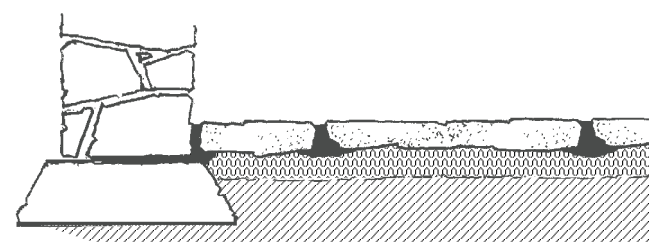
- Stone paving in Illoura Reserve has a particular character which should be re-instated to match original work. The stone is hand-split sandstone and jointing is installed as a poured-in grout finished below stone surfaces and brushed clear of the adjoining stone pieces

- Typical stone wall retaining filled zones, replacing redundant log walls

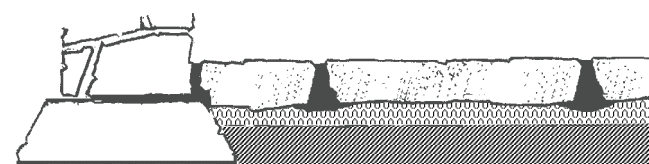
Stone wall detailing to match that of the stone wall supporting the Planting Areas F (a wall that was installed to replace the earlier log wall, sometime after 1970)

## Stone Paving Dimensions

- Stone paving where shown for widening will need to be lifted, relaid and mixed with the new stone supply during construction

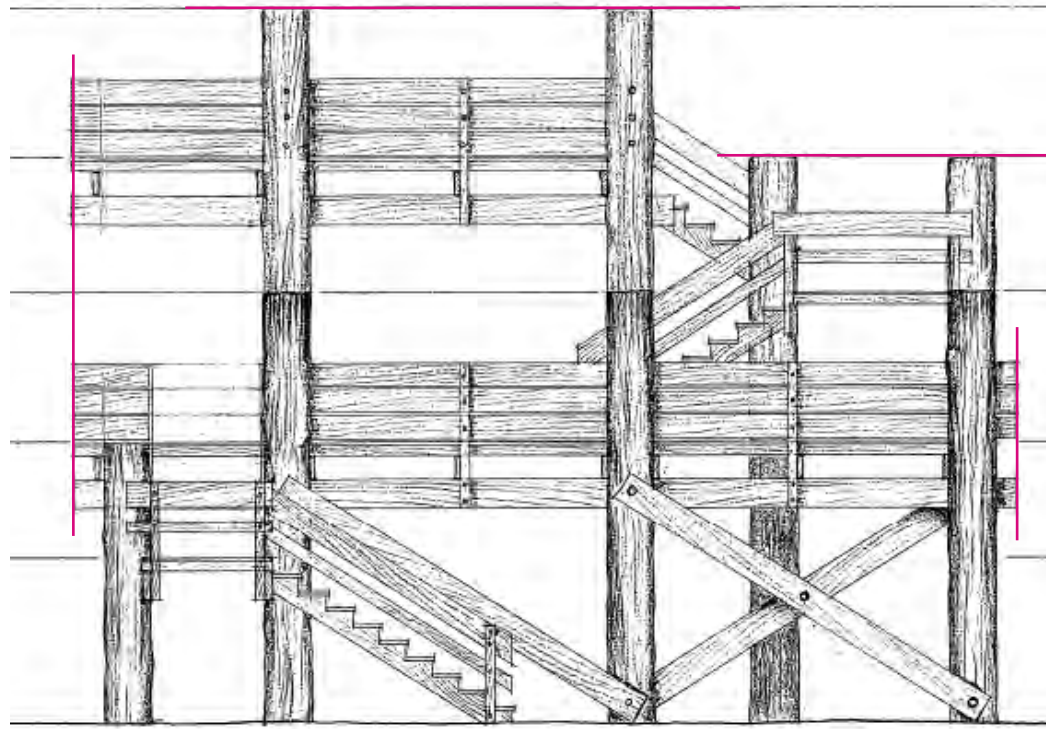


- 50mm to 75mm stone paving
- 50mm sand bed
- Compacted soil base



- 75mm to 100mm stone paving
- 50mm sand bed
- Roadbase as required for anticipated truck load





### The Deck

The recommendation is to align the columns and rails to conform with the original drawings as above.

In any case it would be necessary to cap all post tops with galv sheet steel cut to fit each individual post.

At left below is a view of the stone paving pattern.

Below is an image of bollards at the Edward Street park entrance. These should be in heavy timber.



The 'Seawall' 1969



Earthworks 1970



Early fishing 1970

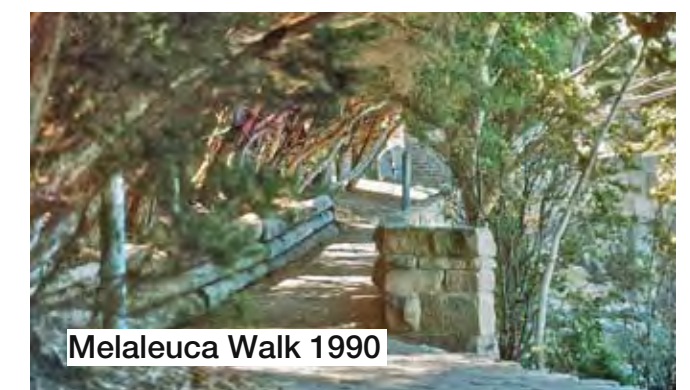


Entry Area- 1970



### Earlier Images

Views of the park during its original circumstances and later as a sheltered enclosure along the 'Melaleuca Walk'



Melaleuca Walk 1990





**Current Images 2012**

